

# Café Soda



## Address

Míšeňská 71/3, 118 00 Praha 1-Malá Strana  
Trams – 12,20,22 to Malostranské náměstí (4 min walk)

Café Bar Soda is a new venue in a very old building. The venue is in the basement of a bar very near to the Charles Bridge. It is regularly used for small scale music and is decorated in a thrown together 'Junk shop' style. Upstairs is a café/ bar with pleasant courtyard, which will remain open during the shows. The bar next to the performance space in the basement will not be open during shows as noise transfers.

## Stage



## Seating

30. On a mix of various chairs with tall bar stools at rear. The central floor is raised approx. 0.30m. This means there is a step down to the alcoves and bar.

**Stage Dimensions**

Width 2.66m (usable). Depth 2.38. Height +0.30m (above already raised floor). The stage is slightly wider than this however there are non movable furniture pieces on either side.

**Sight lines**

Reasonable for standing performer, the stage is raised 0.30m above seating level but seating is on flat. Alcoves cannot see the stage.

**Access**

20 steep stone steps up to outside courtyard

**Audience Entrance**

As Access. There is only one entrance to this venue.

**Dressing Rooms**

None.

**Toilets**

Shared with audience

**Walls**

The walls are hung with paintings that cannot be removed for shows.



Steps down to venue

**Looking to back of room (Toilet entrance in centre)**



**Sound**

Soda has a basic sound set up suitable for small bands.

Mixer Allen & Heath Zed 10 – 4 mic inputs, 2 stereo line inputs

Speakers RCF passive (placed on tables)

Monitors none

Microphones tbc



**Lighting (tbc)**

The lighting at Soda is basic with 3 – 4 spots lighting the stage, simple on off. The lighting is being upgraded but we do not expect it to change that much.

**Storage**

It is not possible to store anything at this venue. All props, costumes, instruments, etc. must be removed each night.

From stage showing back of “prosc arch”. The Modern concrete is part of air ducting.



**Raised flooring in seating area.**



Prague Fringe Festival: Venue Information Pack – Café Soda

**Stage SR showing sound control**



**The Downstairs Bar  
(closed during performances)**



**Courtyard cafe**

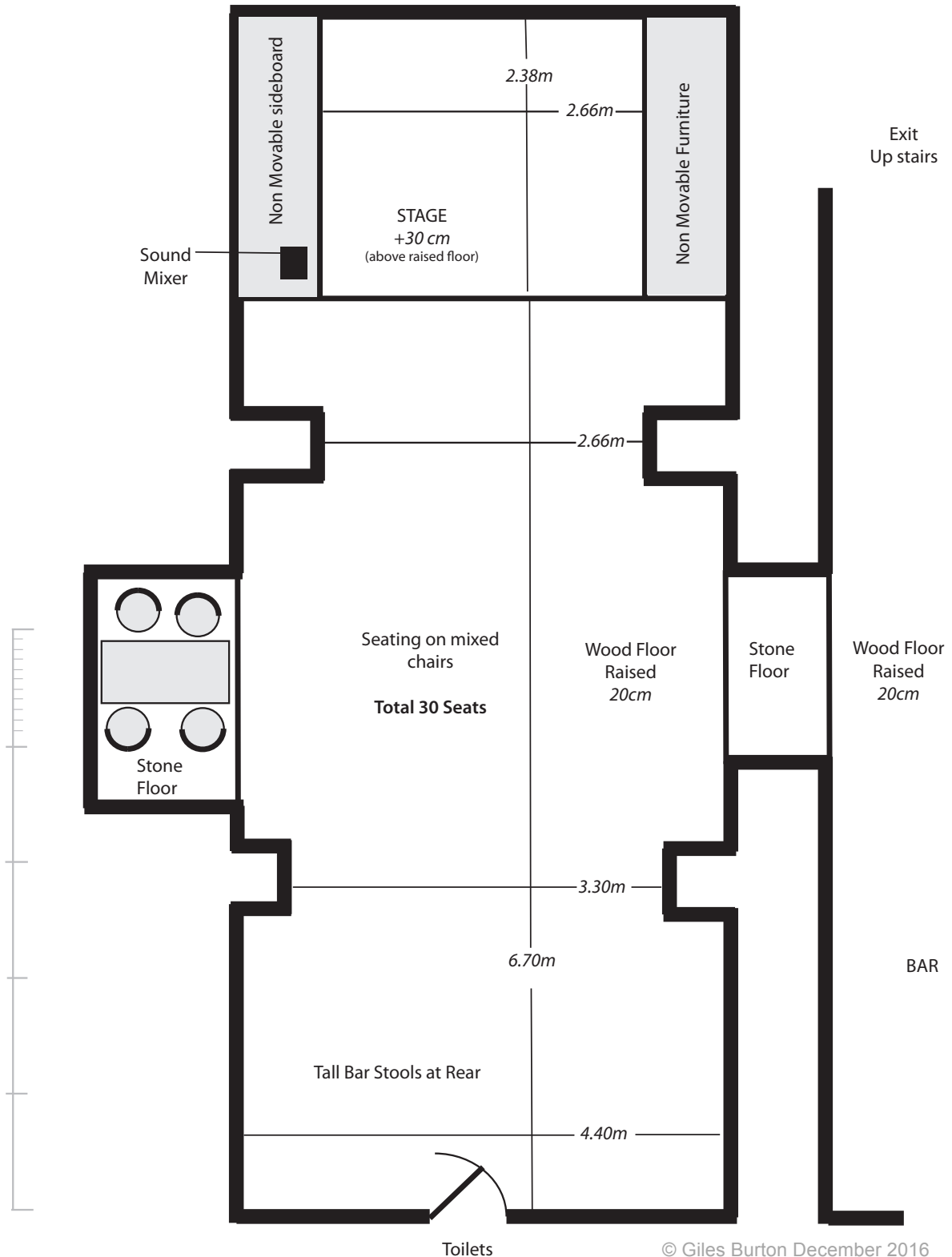


# Cafe Soda

Not to scale

Exact measurements subject to confirmation.

Please check with PFF if you need to confirm details.



© Giles Burton December 2016

Drawn by Giles Burton © December 2016